



San Antonio Holiday

featuring 4 Nights in San Antonio

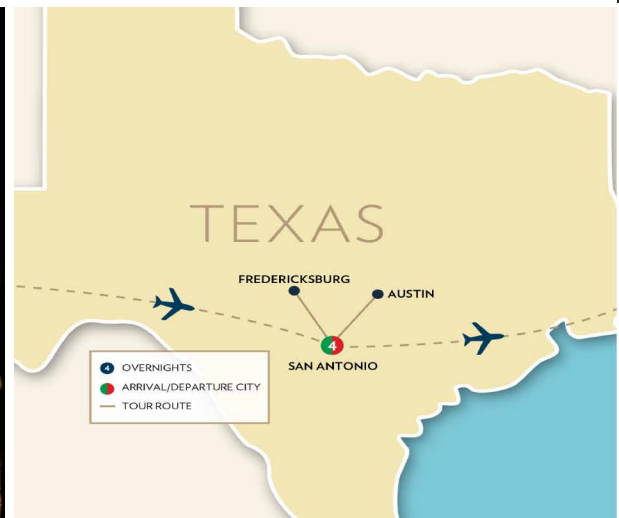
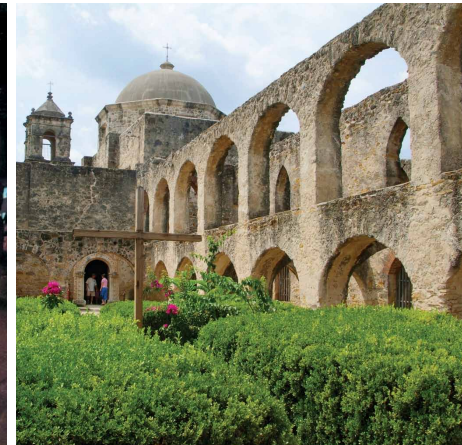
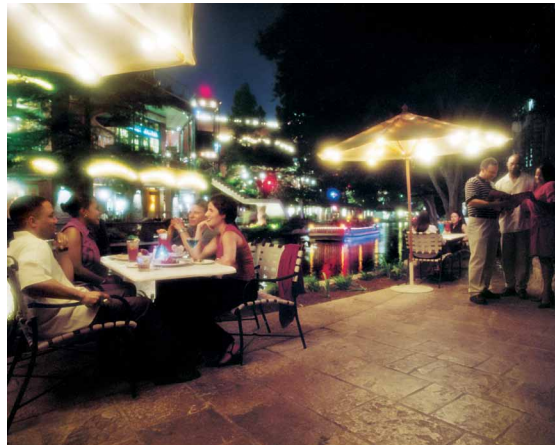
5 Days **December 2019**

Highlights

- San Antonio City Tour
- San Jose Mission
- El Mercado Marketplace
- IMAX Theatre
- Alamo
- Riverwalk Cruise
- Hill Country
- LBJ Ranch
- Fredericksburg
- Fiesta de las Luminarias
- 4 Nights at One Hotel
- *Austin optional*

Inclusions

- Roundtrip Airfare
- 6 Meals: 4-Breakfasts & 2-Dinners
- Professional Tour Director
- Sightseeing per Itinerary
- Motorcoach Transportation
- Hotel Transfers
- Baggage Handling
- 4 Nights First Class Hotel



Tour Rates

Booking Discount - Save \$200 per couple!*

Contact Information

Premier World Discovery • Attn: Group Organizer
 2615 - 190th Street, Suite 200 • Redondo Beach, CA 90278
 877.953.8687
info@premierworlddiscovery.com

Booking ##### (Web Code)

Day 1: Arrive San Antonio

Today arrive in **San Antonio**, the Alamo City, and transfer to your downtown hotel for a four night stay. The city’s old-Spanish flavor, multi-cultural heritage, numerous parks and plazas, and the Riverwalk make it one of America’s more intriguing cities. **The Riverwalk** (Paseo Del Rio) is a fabulous loop off the San Antonio River offering tree-lined footpaths, craft shops, galleries, restaurants and nightspots. This evening enjoy a **Welcome Dinner** with your traveling companions.

Meal - (D) Overnight - San Antonio

Day 2: San Antonio

After breakfast, enjoy a **San Antonio City Tour** featuring many highlights of this great city. Visit the **San Jose Mission** known as the “Queen of the Missions” and restored to its original design in the 1930s by the WPA (Works Projects Administration). Later wander through **El Mercado Marketplace** to hear mariachi music and explore the shops and enjoy lunch on your own. This afternoon go to the **IMAX Theatre** to see the docudrama “The Price of Freedom” which recounts the battle of the Alamo. Later visit the Shrine of Liberty, **the Alamo** where you will see the chapel, one of the most photographed sites in the nation and wander through this historic landmark. Complete your day with a leisurely **Riverwalk Cruise** and learn more about the history of this San Antonio highlight. This evening enjoy dinner on your own along the Riverwalk.

Meal - (B) Overnight - San Antonio

Day 3: Day at Leisure or Austin

Today is at leisure to enjoy San Antonio on your own. Maybe visit the Rivercenter Mall for some holiday shopping, relax while sipping a margarita or savor a Tex Mex enchilada while enjoying the sights and sounds of the wonderfully decorated Riverwalk. Maybe

join an optional tour to the beautiful capital of Texas, Austin. The excursion features an Austin City Tour to see the State Capital, a visit to the LBJ Library & Museum at the University of Texas and the Bullock Texas State History Museum to learn the continually unfolding “Story of Texas.” This evening enjoy dinner on your own at one of San Antonio’s outstanding restaurants.

Meal - (B) Overnight - San Antonio

Day 4: LBJ Ranch - Fredericksburg - Luminarias

Today travel to the **Hill Country** of Texas and take in the scenery. The first stop will be in Stonewall for a tour of the **LBJ Ranch**, the former home of the 36th President, Lyndon Baines Johnson. The tour includes a reconstruction of the farmhouse where LBJ was born and his ranchhouse, referred to as the “Texas White House.” Next visit the German settlement of **Fredericksburg** which retains touches of Old World Heritage. Enjoy time on your own in this quaint town to wander the shops, grab a meal or visit the WWII Museum. Tonight enjoy a **Farewell Dinner** at a popular local restaurant in San Antonio. Later wander the Riverwalk to experience the **Fiesta de las Luminarias**, which features thousands of candles illuminating the Riverwalk.

Meals - (B,D) Overnight - San Antonio

Day 5: San Antonio - Flight Home

This morning transfer to the airport for your flight home filled with many pleasant memories of your **San Antonio Holiday Tour**.

Meal - (B)

Accommodations

- 4 Nights First Class Hotel
- 4 Nights - Holiday Inn Riverwalk, Drury Inn Riverwalk or Sheraton Gunther, San Antonio

Reservation Information & Notes Tour Activity Level Easy **1** **2** **3** **4** Active

DEPOSIT & FINAL PAYMENT
 Deposit of \$300 per person is due with Reservation Form to secure reservations. Final Payment Due Date is 75 days prior to departure.
***BOOKING DISCOUNT**
 Make your Final Payment by check prior to the Final Payment Due Date & receive **\$200 per couple/\$100 per person Booking Discount!**
 •Initial Deposit can be made by check or credit card to be eligible.
 •Payments after Initial Deposit are considered part of Final Payment & must be made by check.
ONLINE BOOKING OPTION
 Save time, postage & secure your seat for this group departure. Simply type <https://res.premierworldldiscovery.com> into your web browser & use the Booking Number (Web Code) from this flyer to make your Deposit online in just a few minutes. No need to submit a Reservation Form if booking online.

PREMIER’S TRAVEL PROTECTION PLAN (TPP) - \$250 per person
 The Pre-Departure Cancellation Fee Waiver (Part A – I & II) is provided by Premier World Discovery (PWD) and is not an insurance benefit. The Post Departure Travel Insurance Plan (Part B) is provided by USI Affinity Travel Insurance Services (USI).
Part A – Cancellation Waiver provided by PWD
I. Trip Cancellation Waiver (TCW) - Guarantees full refund on all payments, except the TPP Fee itself in case of cancellation up to the time and date of departure due to the passenger’s personal illness or death of a member of the immediate family; or, if the passenger must return early due to the passenger’s personal illness or death of a member of the immediate family, a refund for the unused land services. Medical/official documentation required.
II. Premier “Any Reason” Cancellation Waiver (ARCW) - Reimburses 75% of the cancellation fees in the form of a future travel credit certificate (FTCC) valid for 1 year, if you cancel more than 48 hours prior to scheduled departure for any reason not eligible for cash refund under the TCW (Part A – I.). FTCC is non-transferable, may not be redeemed for cash and does not include any credit for the TPP Fee. The TPP Fee (if chosen) is refundable until 180 days prior to departure & cannot be added after Final Payment. **The TPP does not cover any single supplement charges due to an indi-**

vidual’s traveling companion cancelling prior to departure. The TPP is non-transferable and valid for each applicant only. The TPP does not cover any services such as airline tickets not purchased through PWD. Cancellations, Claims & Inquiries under Part A will be administered by PWD. Certain Exclusions and Restrictions apply.
Part B – Post Departure Travel Insurance Plan provided by USI
 Includes coverage for: Trip Interruption (\$1,000); Trip Delay (\$100/Day-Max \$500); Baggage & Personal Effects (\$2,000); Baggage Delay (\$500); Emergency Accident/Sickness Medical Expense (\$30,000); Emergency Evacuation/Repatriation (\$150,000); Accidental Death & Dismemberment (\$25,000); Emergency Travel Assistance (24/7). Claims & Inquiries under Part B will be administered by USI.
 For full Part A and Part B policy details visit: premierworldldiscovery.com/TPP

CANCELLATION FEES
 Cancellations not covered by the Travel Protection Plan (TPP) or if the TPP is not purchased, are subject to the following per person fees:

- Cancel more than 180 days prior to departure:	Full Refund
- Cancel 179-75 days prior to departure:	Deposit or TPP* is Retained
- Cancel 74-45 days prior to departure:	25% of total price
- Cancel 44-15 days prior to departure:	50% of total price
- Cancel 14 days or less prior to departure/no shows:	No refunds

*If purchased with Initial Deposit

- IMPORTANT CONDITIONS/NOTES**
- Tour rates are subject to increase until you are paid in full.
 - Itinerary and hotels are subject to change.
 - Responsibility Statement available on Reservation Form Page
 - Reservation Form Page available as attached page 3, from your group organizer or by visiting premierworldldiscovery.com or see the Online Booking Option.
 - CST #2048841-40

Premier World Discovery Reservation Form (USA)

DEPOSIT & FINAL PAYMENT

Deposit of \$300 per person is due with Reservation Form to secure reservations. Final Payment Due Date is 75 days prior to departure.

*BOOKING DISCOUNT

Make your Final Payment by check prior to the Final Payment Due Date & receive **\$200 per couple/\$100 per person Booking Discount!**

- Initial Deposit can be made by check or credit card to be eligible.
- Payments after Initial Deposit are considered part of Final Payment & must be made by check.

ONLINE BOOKING OPTION

Save time, postage & secure your seat for this group departure. Simply type <https://res.premierworlddiscovery.com> into your web browser & use the Booking Number (Web Code) from this flyer to make your Deposit online in just a few minutes. No need to submit a Reservation Form if booking online.

PREMIER'S TRAVEL PROTECTION PLAN (TPP) - \$250 per person

The Pre-Departure Cancellation Fee Waiver (Part A - I & II) is provided by Premier World Discovery (PWD) and is not an insurance benefit. The Post Departure Travel Insurance Plan (Part B) is provided by USI Affinity Travel Insurance Services (USI).

Part A - Cancellation Waiver provided by PWD

I. Trip Cancellation Waiver (TCW) - Guarantees full refund on all payments, except the TPP Fee itself in case of cancellation up to the time and date of departure due to the passenger's personal illness or death of a member of the immediate family; or, if the passenger must return early due to the passenger's personal illness or death of a member of the immediate family, a refund for the unused land services. Medical/official documentation required.

II. Premier "Any Reason" Cancellation Waiver (ARCW) - Reimburses 75% of the cancellation fees in the form of a future travel credit certificate (FTCC) valid for 1 year, if you cancel more than 48 hours prior to scheduled departure for any reason not eligible for cash refund under the TCW (Part A - I.). FTCC is non-transferable, may not be redeemed for cash and does not include any credit for the TPP Fee. The TPP Fee (if chosen) is refundable until 180 days prior to departure & cannot be added after Final Payment. The TPP does not cover any single supplement charges due to an individual's traveling companion cancelling prior to departure. The TPP is non-transferable and valid for each applicant only. The TPP does not cover any services such as airline tickets not purchased through PWD. Cancellations, Claims & Inquiries under Part A will be administered by PWD. Certain Exclusions and Restrictions apply.

Part B - Post Departure Travel Insurance Plan provided by USI

Includes coverage for: Trip Interruption (\$1,000); Trip Delay (\$100/Day-Max \$500); Baggage & Personal Effects (\$2,000); Baggage Delay (\$500); Emergency Accident/Sick-

ness Medical Expense (\$30,000); Emergency Evacuation/Repatriation (\$150,000); Accidental Death & Dismemberment (\$25,000); Emergency Travel Assistance (24/7). Claims & Inquiries under Part B will be administered by USI.

For full Part A and Part B policy details visit: premierworlddiscovery.com/TPP

CANCELLATION FEES

Cancellations not covered by the Travel Protection Plan (TPP) or if the TPP is not purchased, are subject to the following per person fees:

- | | |
|---|-----------------------------|
| - Cancel more than 180 days prior to departure: | Full Refund |
| - Cancel 179-75 days prior to departure: | Deposit or TPP* is Retained |
| - Cancel 74-45 days prior to departure: | 25% of total price |
| - Cancel 44-15 days prior to departure: | 50% of total price |
| - Cancel 14 days or less prior to departure/no shows: | No refunds |
- *If purchased with Initial Deposit

RESPONSIBILITY

Premier World Tours LLC dba Premier World Discovery (hereafter PWD), whose vouchers are used by respective agents for the passenger in all matters pertaining to hotel accommodations, sightseeing tours and transportation, hold themselves free of responsibility for any damages occasioned from any cause whatsoever. PWD will not be responsible for any damages or inconvenience caused by late arrivals, departures and change of schedule or other conditions nor will they be responsible for any act, omission, or event during the time the passenger is not on board their conveyance. The passage contract in use by the airline concerned, when issued, shall constitute the sole contract between the airline and the purchaser of this tour/cruise, and/or passenger. PWD does not hold any responsibility for the conduct of any of its members, hotel, motorcoach, cruiseline, train, airline or other personnel. PWD reserves the right to decline to accept or retain any person as a member of a tour/cruise at its discretion. PWD &/or its Tour Director retain the right to require any participant to withdraw from a tour/cruise at any time, if determined to be in the best interests of health, safety & general welfare of the tour/cruise group or of the individual participant. *Arbitration* - I/We agree, any and all disputes concerning this contract or any other material concerning the trip, or the trip itself must be resolved exclusively pursuant to binding arbitration in the state of California, pursuant to the then current rules of the American Arbitration Association. Payment of the deposit for this tour/cruise constitutes acceptance of these terms and conditions. CST #2048841-40

IMPORTANT CONDITIONS/NOTES

- Tour rates are subject to increase until you are paid in full.
- Itinerary and hotels are subject to change.

Reservation Form

San Antonio Holiday
December, 2019
Booking ##### (Web Code)

Make Checks Payable to: Premier World Discovery

Contact Information/Mail Reservation Form to:

Premier World Discovery • Attn: Group Organizer
2615 - 190th Street, Suite 200 • Redondo Beach, CA 90278
877.953.8687
info@premierworlddiscovery.com

Enclosed please find a deposit in the amount of \$ _____ (\$300 per person) to secure reservations for _____ # of people.

Premier's Travel Protection Plan (TPP): Yes, I (we) wish to purchase travel protection (TPP) No, I (we) decline travel protection (TPP)

Enclosed please find payment in the amount of \$ _____ (\$250 per person) to secure the Premier's Travel Protection Plan (TPP).

Total Payment \$ _____

RT AIR GATEWAY _____

ROOMMATE'S RT AIR GATEWAY _____

see flyer page 1 for included group RT air gateway/departure city, additional charges apply for other RT air gateways

To avoid change fees, submit full legal names (first/mid/last) exactly as they appear on government issued travel documentation

Legal Name _____ DOB (MM/DD/YY) _____ Gender M F

Roommate's Legal Name _____ DOB (MM/DD/YY) _____ Gender M F

Your Address _____ Check if Roommate's address is the same

City _____ State _____ ZIP _____ Tel # _____

Email Address _____ Mbl # _____

Emergency Contact/Tel # _____ Other Notes _____

Cardholder Name (if paying by credit card) _____



Amount to be charged \$ _____ Credit Card #: _____ Exp. Date: _____

Cardholder Billing Address: Check if address is the same as above _____

Signature Required (for credit card use & acceptance of terms*): _____ Today's Date: _____

*I (We) agree to pay according to the credit card issuer agreement. I understand and accept the cancellation fees/policy and other terms.